

## TODAY'S MESSAGE:

CSI: Examining the Evidence of Creation

### 4. Analyzing the Data

Job 40:15-24

April 28, 2013

*Look at the behemoth, which I made along with you and which feeds on grass like an ox. (Job 40:15)*



**Believing and Non-Believing Scientists have the  
S\_\_\_\_\_ E\_\_\_\_\_.**

**“I am convinced there is far more evidence for a recent, six-day creation and a global Flood than there is for an old earth and evolution.”** Keith Wanser, Ph.D. Condensed Matter Physics, 1999.

#### PROBLEMS IN THE DATA:

1. **LIFE:** (How to explain it)

*For in him we live and move and have our being. (Acts 17:28)*

2. **CONTINENTAL DRIFT:** (Not enough Kinetic Energy)

3. **BIRDS:** (Irreducible Complexity)

*So God created the great creatures of the sea and every living and moving thing with which the water teems, according to their kinds, and every winged bird according to its kind. And God saw that it was good. (Gen 1:21)*

4. **THE EYE:** (Irreducible Complexity)

*Ears that hear and eyes that see—the LORD has made them both. (Prov 20:12)*

5. **BACTERIAL FLAGELLUM:** (Irreducible Complexity)

6. **THE MOON:** (Fusion, Capture, Cloud/Nebula, Collision Theories & Lunar Recession don't fit observation)

7. **OCEAN FLOOR:** (Not enough “mud” on the ocean floor)

8. **EARTH STRATA:** (Many are bent too tightly)

9. **STONE AGE SKELETONS:** (not enough in the fossil record)

10. **HISTORY TOO SORT:** (100,000 years had monuments, cave paintings and lunar records but no other history?)

11. **DINOSAURS:** (No viable theory for extinction, & evidence they existed simultaneous with humans – see Job 40:15ff)

12. **POLYSTRATE FOSSILS:** (Better explained by flood)

13. **ACCELERATOR MASS SPECTROMETRY:** (C-14 measurable & consistent across all layers)

14. **GENE DEPLETION:** (no new & beneficial gene data added)

15. **MUTATIONS:** (known to be weaker/deadly)

16. **INTERMEDIATE FORMS:** (No clear evidence)

*Look at the behemoth, which I made along with you and which feeds on grass like an ox. (Job 40:15 ff)*

#### ANALYZING THE DATA:

1. **BIBLICAL CREATION Predicts:**

- Animals produce “after their kind” (Gen 1:21)
- Geological evidence of a global flood

2. **DARWINIAN EVOLUTION Predicts:**

- Should find organisms adding new & beneficial data to existing gene pools
- Should find numberless intermediate forms

Creation's Predictions/Criteria are satisfied, Evolution's are NOT.

Creation as a Hypothesis is refutable, Evolution is NOT.

**For since the creation of the world God's invisible qualities—his eternal power and divine nature—have been clearly seen, being understood from what has been made, so that men are without excuse. (Romans 1:20)**

---

**For Reflection / Action:** What things do all animals have in common? What are some differences? How does science claim to define life? How does God? What do you find marvelous about the flight of birds or the seeing eye? Do you believe the strata layers were formed over millions of years or in a global flood? What so-called “evidence” for evolution do you still find compelling? Do you believe that creation testifies to God's presence and power?

All Scripture, unless otherwise noted, is taken from the “New International Version” (NIV).  
Graphic slides courtesy of Russ Miller, [www.creationministries.org](http://www.creationministries.org).



**CSI** : Examining  
the Evidence of  
Creation

Analyzing  
the Data



*Pastor Augie Iadicicco*

**Believing and Non-Believing Scientists  
have the  
SAME EVIDENCE**

**“I am convinced there is far more evidence for a recent, six-day creation and a global Flood than there is for an old earth and evolution.” Keith Wanser, Ph.D. Condensed Matter Physics, 1999.**





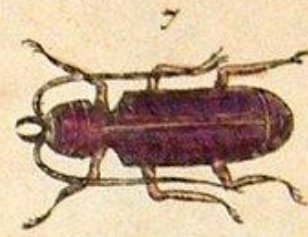
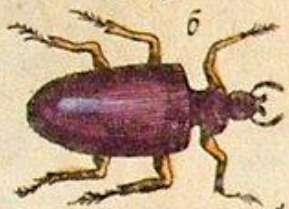
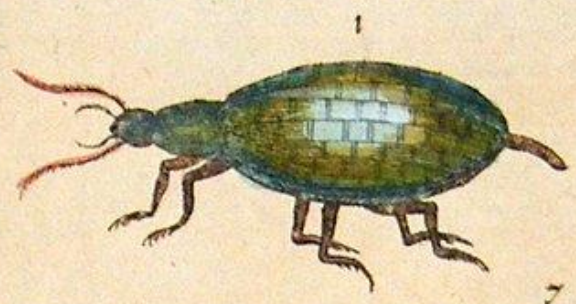






Scarabæi.

Albrovandi. Tab. 1



Tab. 2



Tab. 3. et. 4.



*PROBLEMS IN THE DATA:*

**1. LIFE:** (How to explain it)



*PROBLEMS IN THE DATA:*

**1. LIFE:** (How to explain it)



**PROBLEMS IN THE DATA:**

**1. LIFE:** (How to explain it)

*For in him we live and move and have  
our being. (Acts 17:28)*



*PROBLEMS IN THE DATA:*

**2. CONTINENTAL DRIFT:** (Not enough Kinetic Energy)

*PROBLEMS IN THE DATA:*

**3. BIRDS: (Irreducible Complexity)**





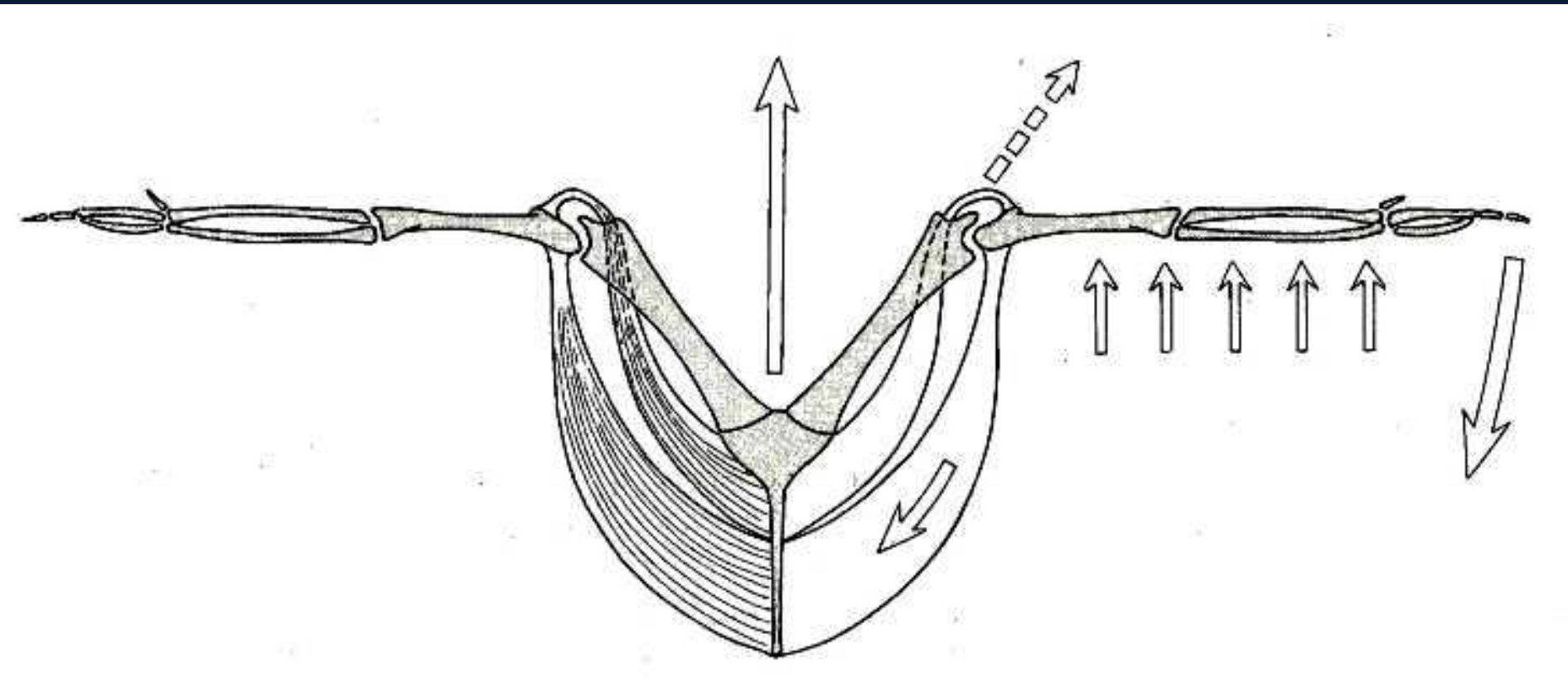
*PROBLEMS IN THE DATA:*

**3. BIRDS: (Irreducible Complexity)**



**PROBLEMS IN THE DATA:**

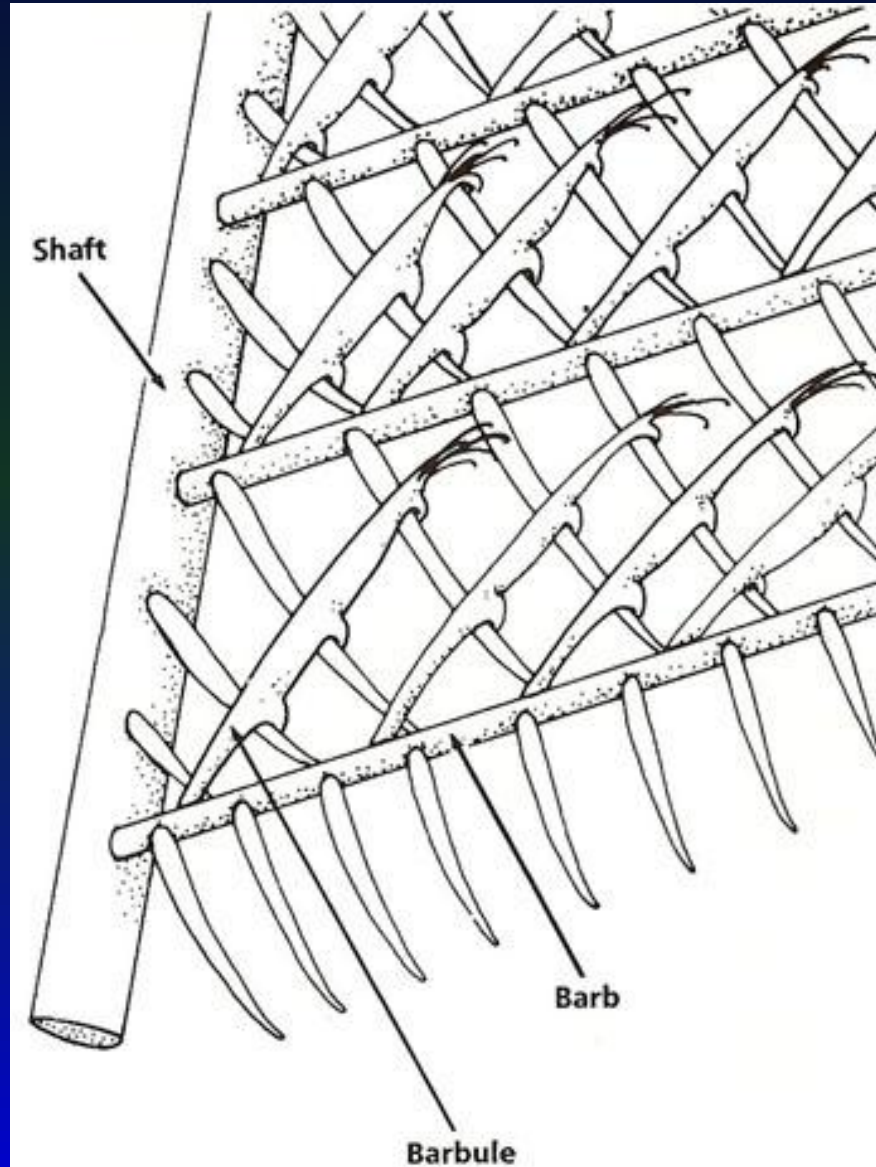
**3. BIRDS: (Irreducible Complexity)**





**PROBLEMS IN THE DATA:**

**3. BIRDS: (Irreducible Complexity)**

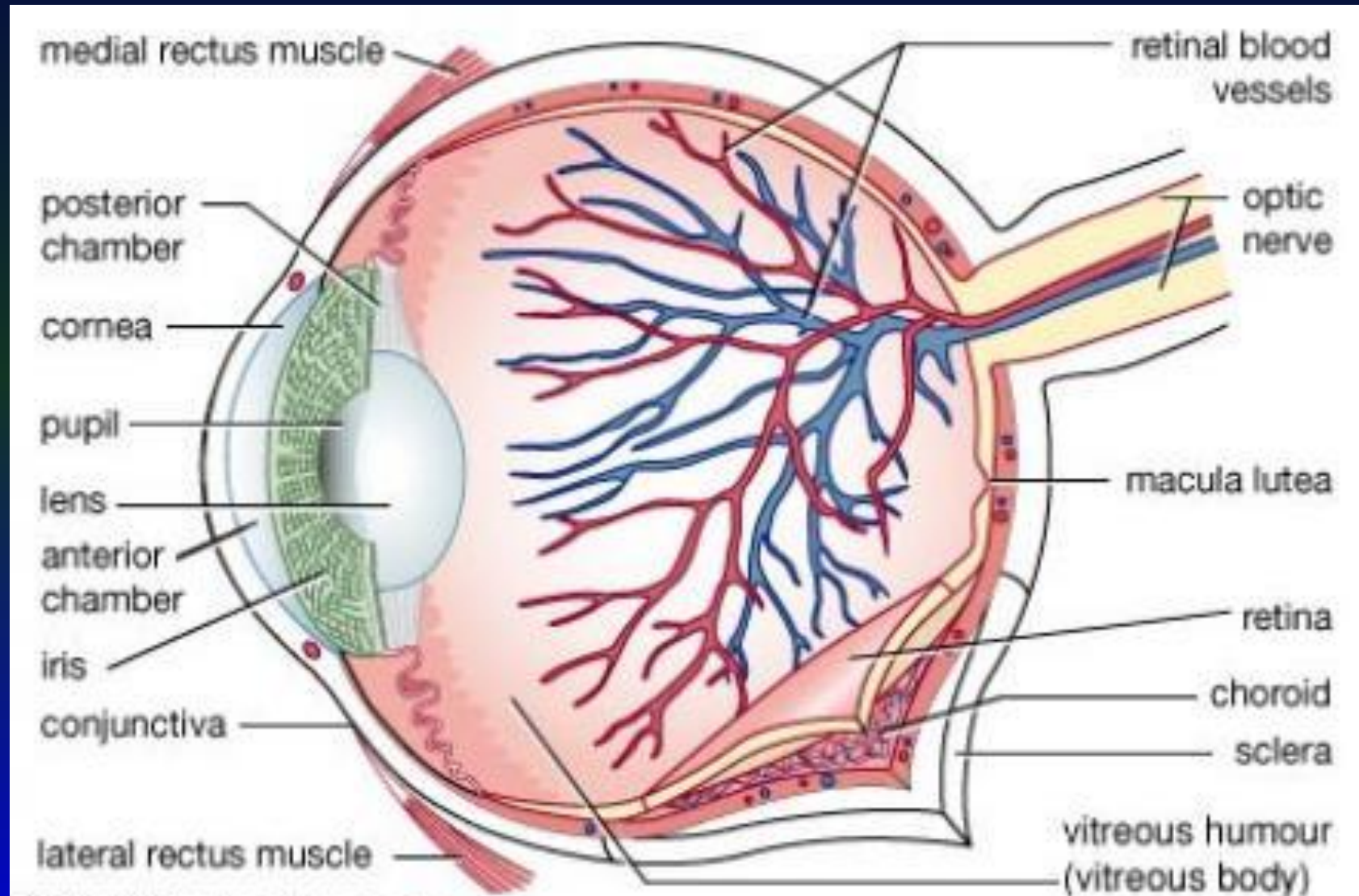


PROBLEMS IN THE DATA:

### 3. BIRDS: (Irreducible Complexity)

*So God created the great creatures of the sea and every living and moving thing with which the water teems, according to their kinds, and every winged bird according to its kind. And God saw that it was good. (Gen 1:21)*

# 4. THE EYE: (Irreducible Complexity)





PROBLEMS IN THE DATA:

# 4. THE EYE: (Irreducible Complexity)



**PROBLEMS IN THE DATA:**

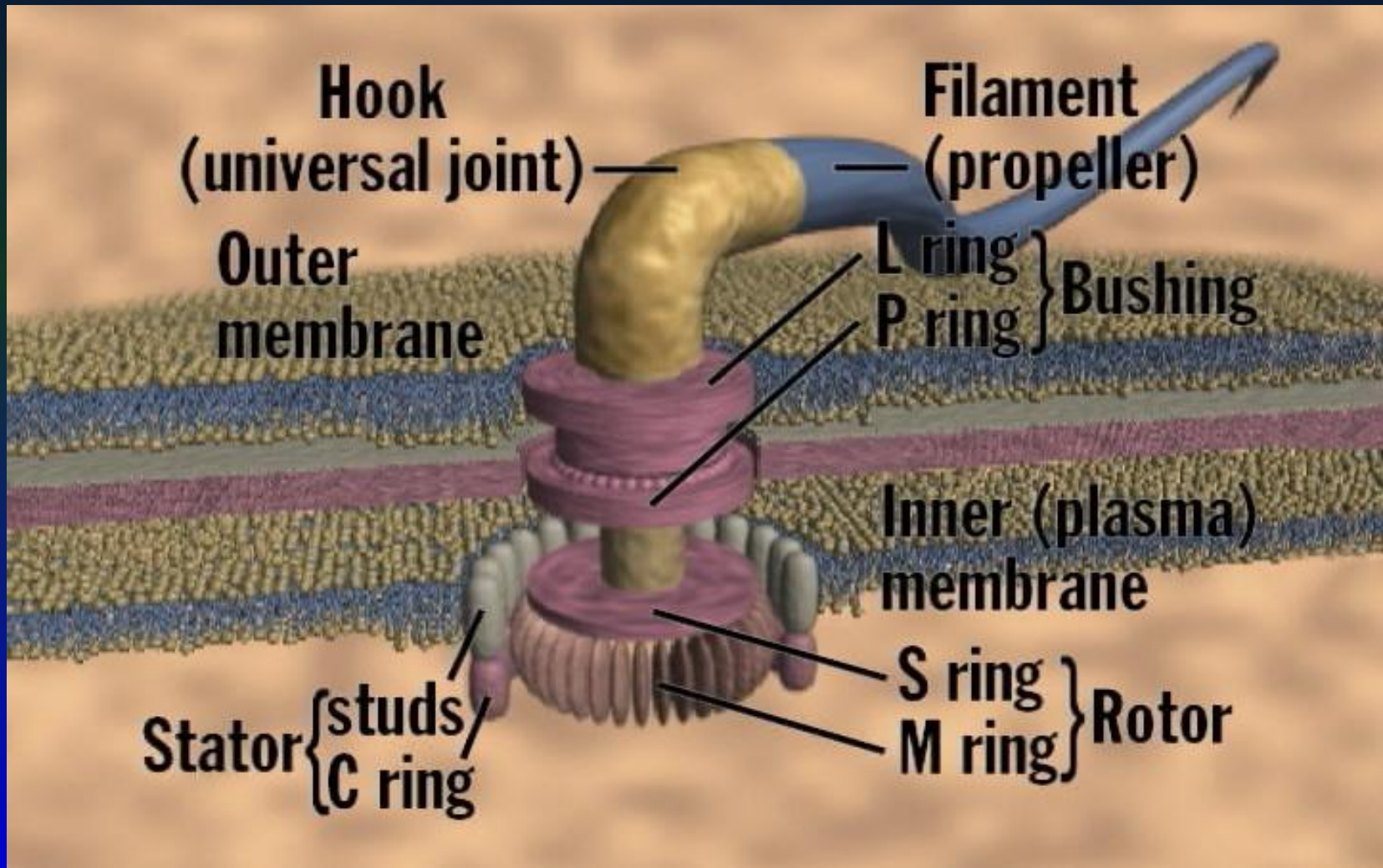
**4. THE EYE: (Irreducible Complexity)**

*Ears that hear and eyes that see—  
the LORD has made them both.*

(Prov 20:12)

PROBLEMS IN THE DATA:

# 5. BACTERIAL FLAGELLUM: (Irreducible Complexity)





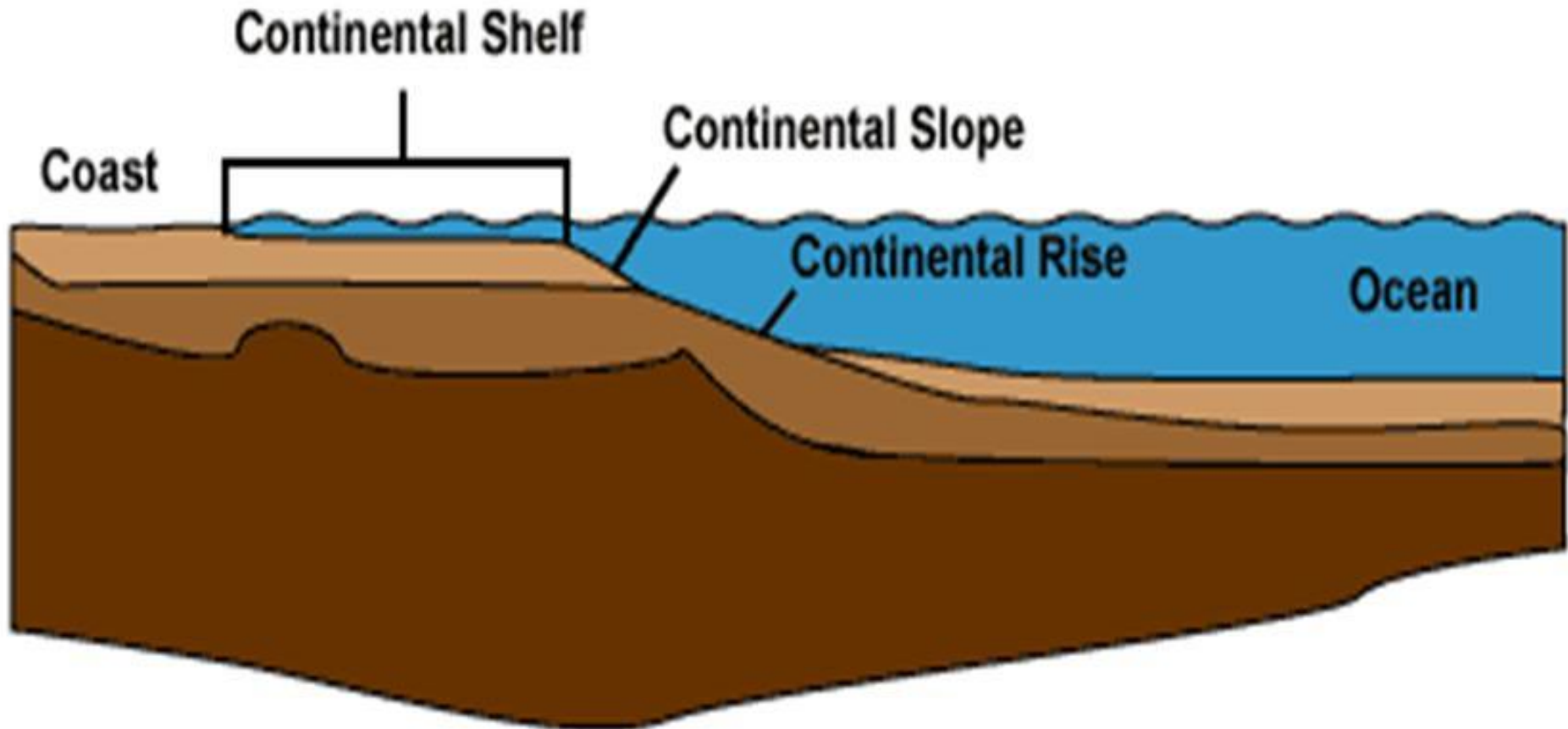
*PROBLEMS IN THE DATA:*

**6. THE MOON:** (Fusion, Capture, Cloud/Nebula, Collision Theories & Lunar Recession don't fit observation)



**PROBLEMS IN THE DATA:**

**7. OCEAN FLOOR:** (Not enough  
“mud” on the ocean floor)



*PROBLEMS IN THE DATA:*

**8. EARTH STRATA: (Many are bent too tightly)**





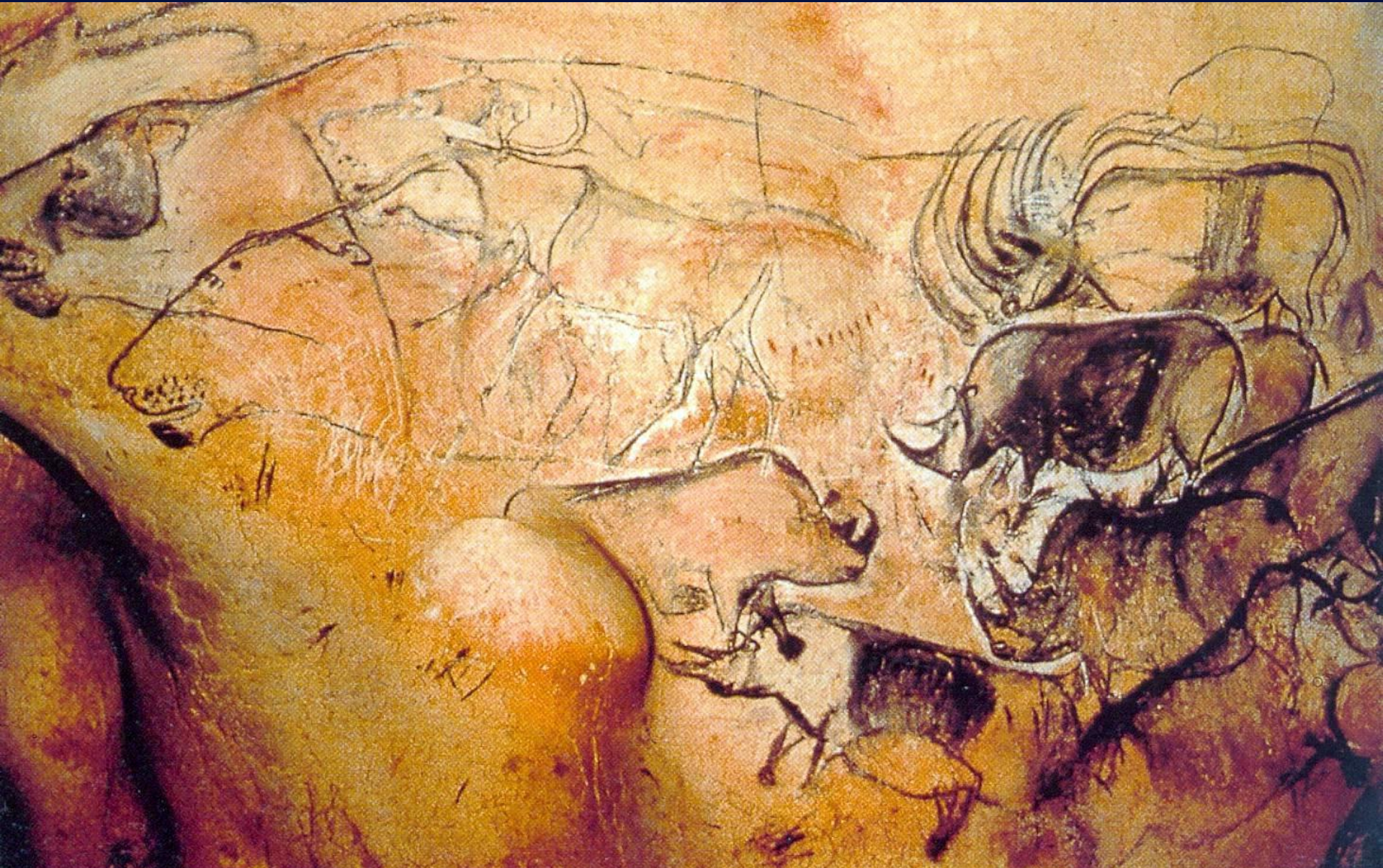
*PROBLEMS IN THE DATA:*

**9. STONE AGE SKELETONS:** (not enough in the fossil record)



*PROBLEMS IN THE DATA:*

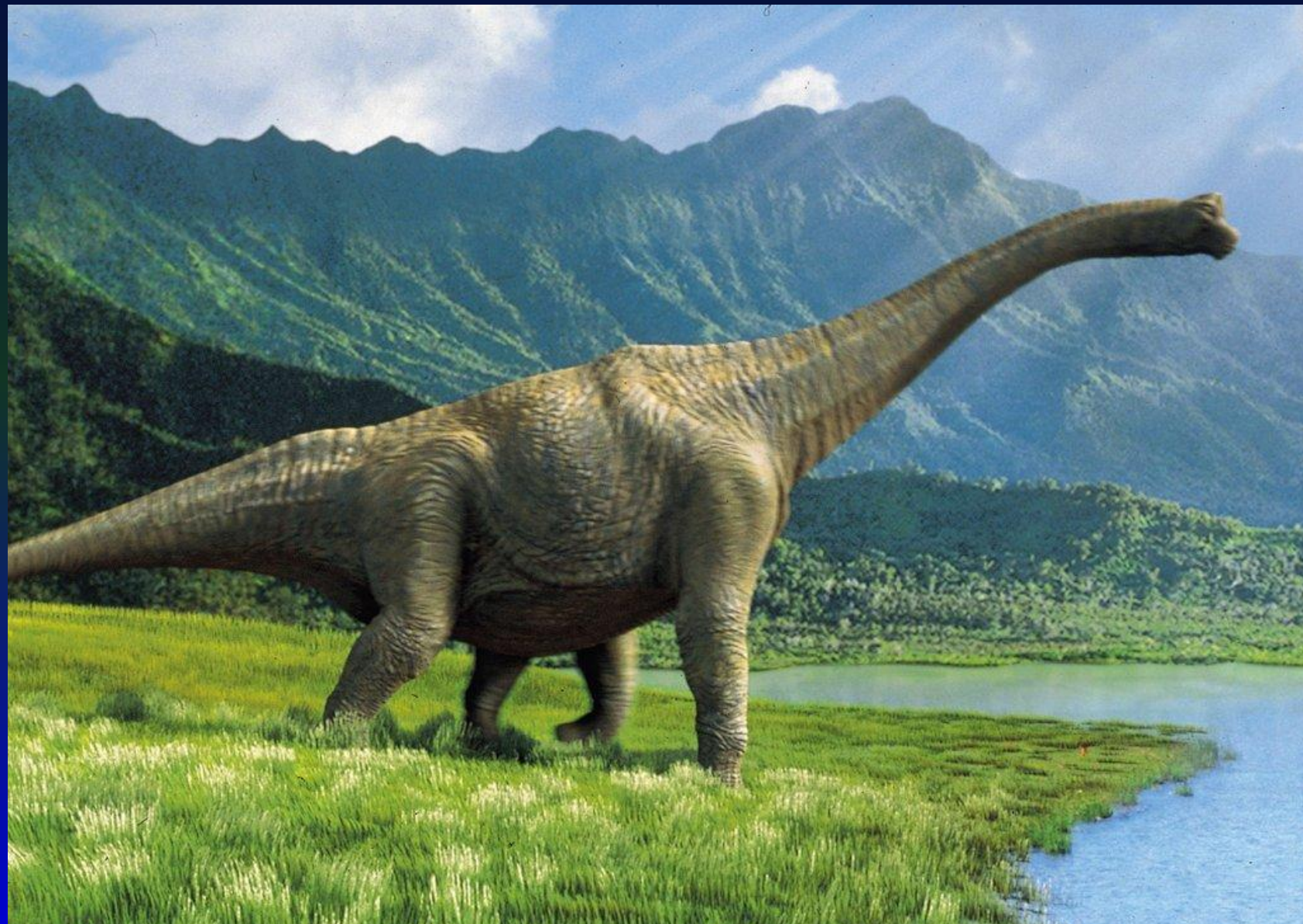
# 10. HISTORY TOO SHORT:





*PROBLEMS IN THE DATA:*

**11. DINOSAURS:**





*PROBLEMS IN THE DATA:*

**11. DINOSAURS:** “Look at Behemoth, which I made along with you and which feeds on grass like an ox. What strength it has in its loins, what power in the muscles of its belly! Its tail sways like a cedar; the sinews of its thighs are close-knit. Its bones are tubes of bronze, its limbs like rods of iron.

It ranks first among the works of God...” – **Job 40:15-19**

*PROBLEMS IN THE DATA:*

# 11. DINOSAURS:





# T-Rex Blood

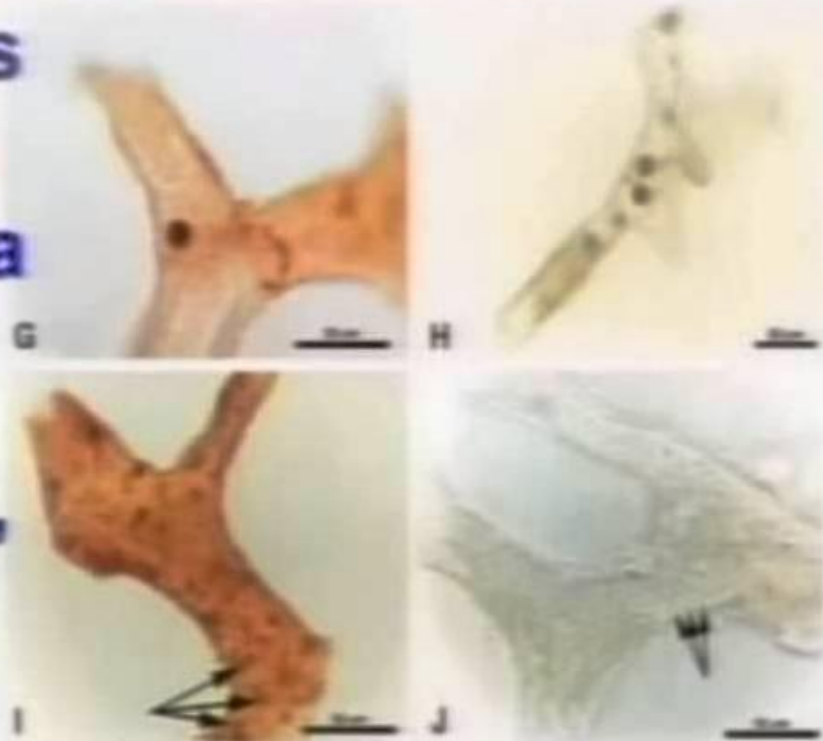
- In 1992 a team in Montana found an unfossilized T-Rex leg bone with “dinosaur blood inside the bone.”

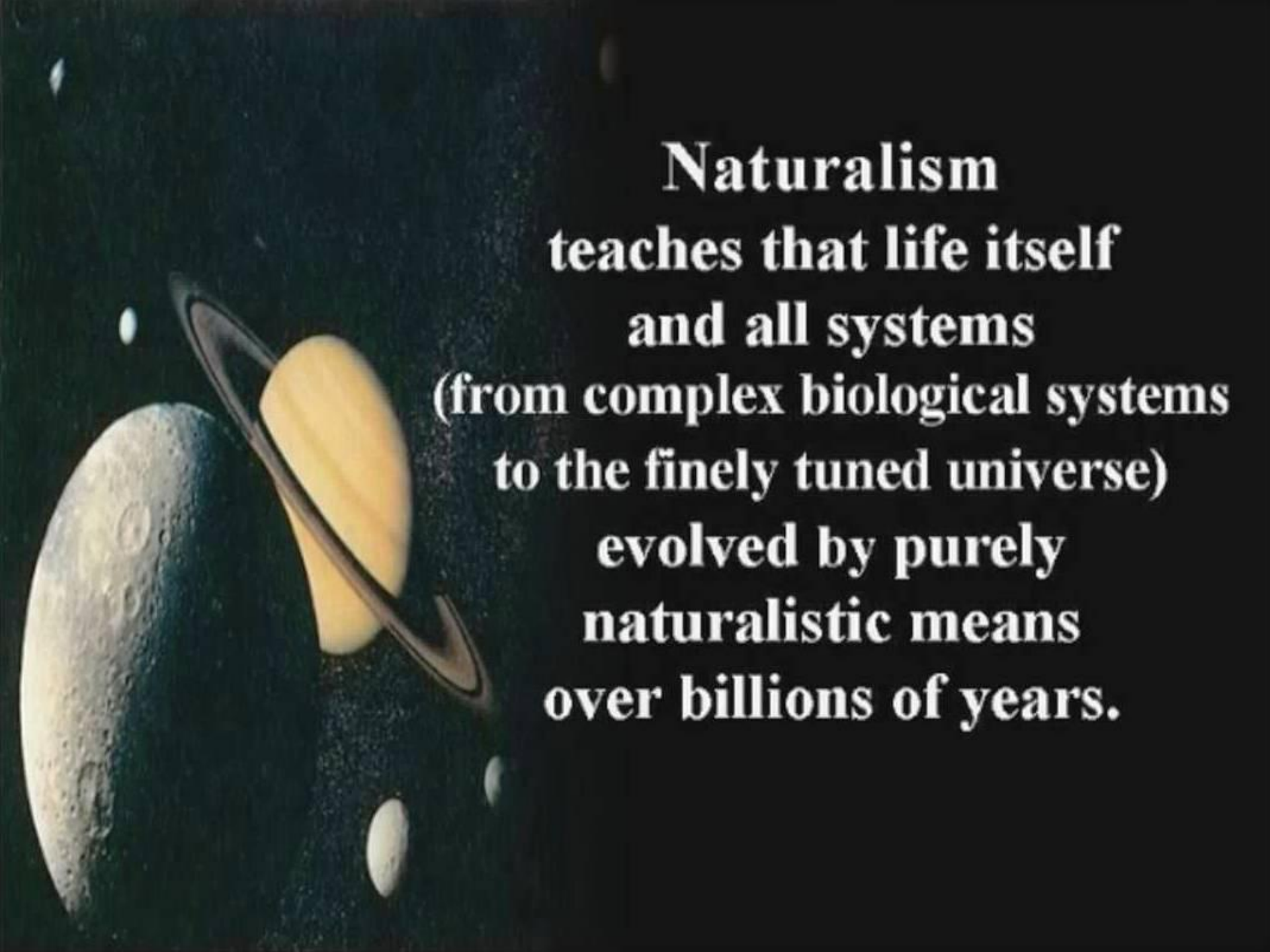
- *Earth*, June 1997, pp 55-57



- “...soft, flexible structures that appear to be blood vessels from the bone of a T-rex... found small red microstructures that resemble red blood cells.”

*Scientist*, March 2005



A composite image of celestial bodies against a dark, starry background. On the left, a large, cratered Moon is visible. To its right is the planet Saturn, showing its characteristic rings. Further right is the planet Jupiter, appearing as a bright, yellowish-orange oval. Several smaller, distant stars or planets are scattered across the scene.

**Naturalism  
teaches that life itself  
and all systems  
(from complex biological systems  
to the finely tuned universe)  
evolved by purely  
naturalistic means  
over billions of years.**



A testable hypothesis  
must be:

- A) **realistic** in nature;
- B) **predictable**; and
- C) **refutable**.



## Biblical Creationism predicts:

- 1] Biology will find that plant/animals will **only reproduce their own kind** with variations occurring within their kind;
- 2] Geology will find evidences of a **global, catastrophic, aqueous event.**

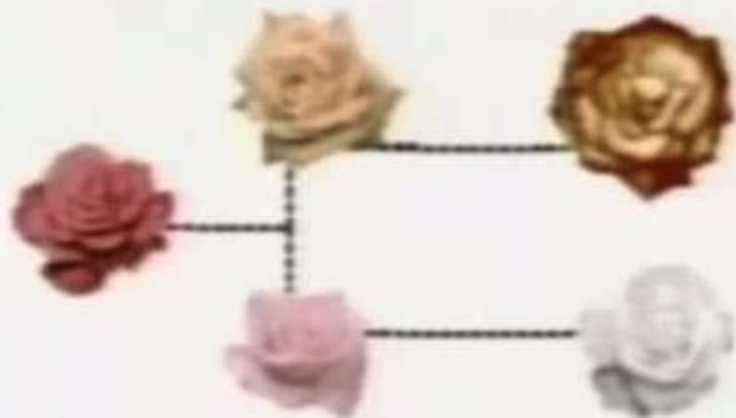


# Micro-Adaptations

**Kinds bringing forth  
after their kind are both**

**Biblical &  
scientific facts.**

**(Millions of examples could be shown)**





## Biblical Creationism predicts:

- 1] Biology will find that plant/animals will **only reproduce their own kind** with variations occurring within their kind;
- 2] Geology will find evidences of a **global, catastrophic, aqueous event.**

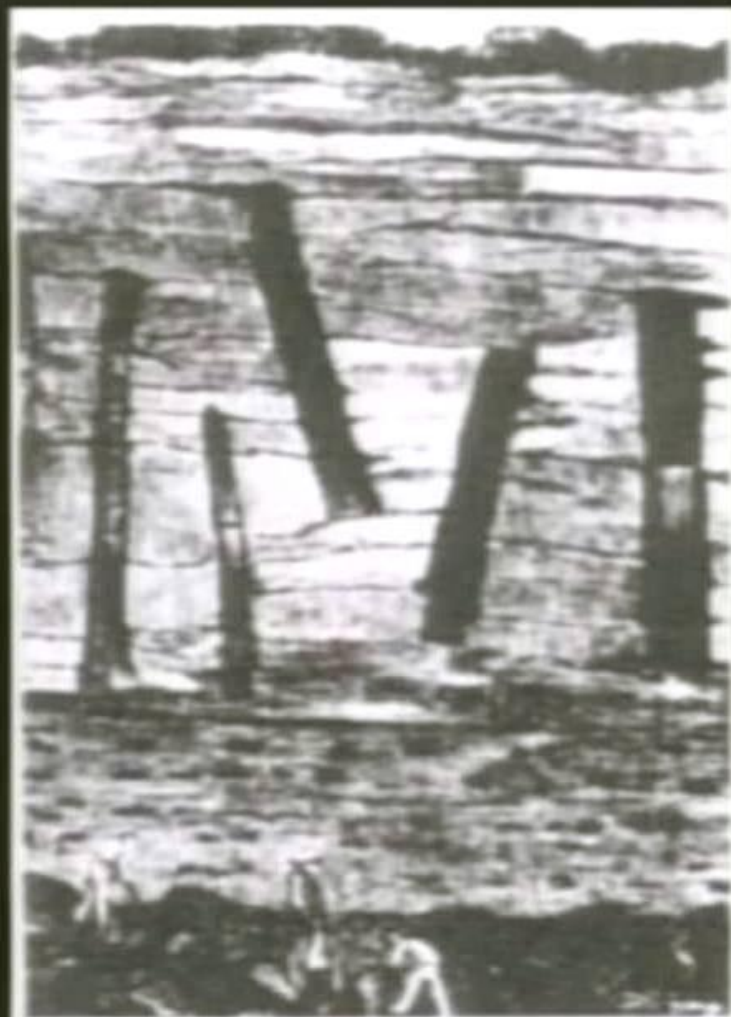




# Polystrate Fossils

Some  
**polystrate trees**  
are upside down  
extending through  
**multiple layers**  
including layers of  
coal.

Picture from  
*Bone of Contention*  
by Silvia Baker  
page 12



*Polystrate tree trunks near Saint-Etienne, France.*

**Figure 6-8** A geologic column is a drawing of rock layers in order of age.



**Accelerator  
Mass  
Spectrometer  
(AMS)  
testing shows  
organic samples  
from all  
Phanerozoic  
layers  
contain C-14!**

**Naturalism assumes that Darwinism is a fact**

**Darwinism predicts:**

- 1| Biology will find:  
organisms adding  
new & beneficial data  
to existing gene pools;**
- 2| Geology will find:  
the fossil record filled with  
millions of transitional kinds.**





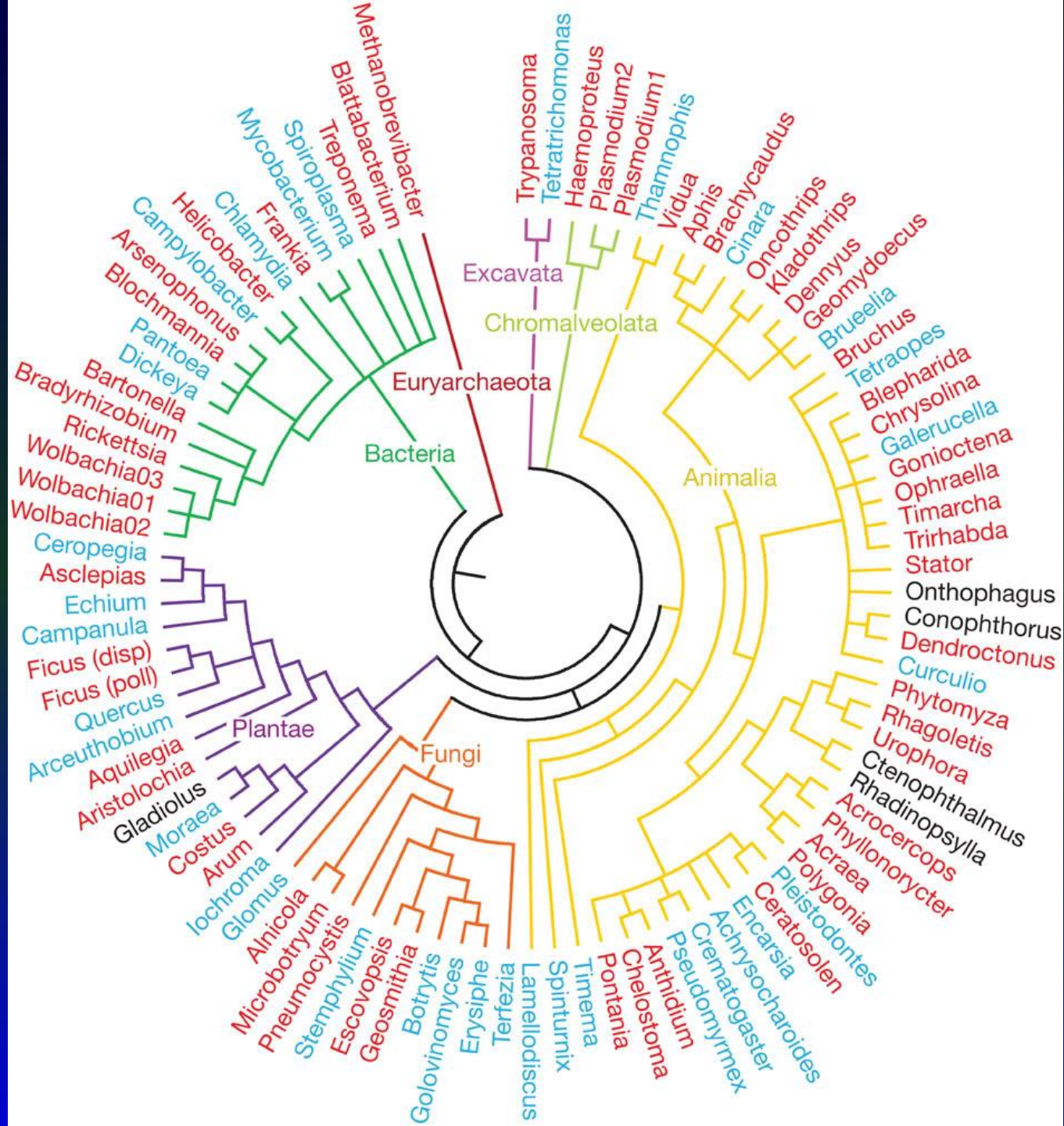
# Mutations

*“[mutations] are always...weaker  
than their parent form...and in...  
free competition they are eliminated ...  
therefore they are never found in nature and...  
appear only in the...laboratory”*

- Famed Swedish evolutionist, Professor Herbert Nilsson of Lund University







**Biblical Creationism** is a religious based theory which meets its predictions and is refutable.

**Naturalism** is a religious based theory which fails its own predictions and is non-refutable.



**For since the creation of the world  
God's invisible qualities—his eternal  
power and divine nature—have been  
clearly seen, being understood from  
what has been made,  
so that men are without excuse.**

**(Romans 1:20)**



*Some slides courtesy of Creation, Evolution & Science Ministries*  
*[www.creationministries.org](http://www.creationministries.org)*